

# U.S. Equity Capital Markets

## Daily Market Update



Friday, August 7, 2015

Data as of 8:00 AM

# Ipreso Daily Market Update

## Priced Deals

Week of August 3, 2015

### Initial Public Offerings This Week (5)

Issue Date	Issuer	Ticker	Sector	Domicile	Exchange	Bookrunners	Fin. Spons.	Filed Terms		Pricing Statistics				Performance Statistics		
								Last File Range (\$)	Last Offer Amt. (\$M)	Amt. + Over. (\$M)	Offer Price (\$)	Shrs. Offered	% Primary	Shoe Exer.	Last File/ Offer (%)	Offer/ Curr. (%)
8/4/15	Amplify Snack Brands, Inc.	BETR	Consumer Goods	United States	NYSE	GS, JEFFER, CS, SUNTCAP	•	14 - 16	225.0	270.0	18.00	15.0	0.0	20.00	-12.78	Above
8/4/15	SunRun, Inc.	RUN	Energy	United States	NASDAQ	CS, GS, MS, BAML, RBC	•	13 - 15	250.6	250.6	14.00	17.9	97.7	0.00	-37.36	Within
8/6/15	Planet Fitness, Inc.	PLNT	Consumer Services	United States	NYSE	JPM, BAML, JEFFER, CS, GUGGEN, RBAIRD, WBLAIR, PIPER	•	14 - 16	202.5	216.0	16.00	13.5	67.6	6.67	0.00	Within
8/5/15	Aimmune Therapeutics, Inc.	AIMT	Healthcare	United States	NASDAQ	BAML, CS, PIPER	•	14 - 16	125.0	184.0	16.00	10.0	100.0	6.67	50.63	Within
8/4/15	Zynerba Pharmaceuticals, Inc.	ZYNE	Healthcare	United States	NASDAQ	JEFFER, PIPER	•	13 - 15	42.0	42.0	14.00	3.0	100.0	0.00	38.00	Within
<b>Total:</b>										<b>962.6</b>	<b>Average:</b>			<b>6.67</b>	<b>7.70</b>	

### Follow-On Offerings This Week (13)

Issue Date	Issuer	Ticker	Sector	Domicile	Exchange	Bookrunners	Accel. Deal	Shelf Take.	Filed Terms		Pricing Statistics				Performance Statistics		
									Last File Range (\$)	Last Offer Amt. (\$M)	Amt. + Over. (\$M)	Offer Price (\$)	Shrs. Offered	% Primary	Shoe Exer.	Last Sale/ Offer (%)	Offer/ Curr. (%)
8/5/15	Summit Materials, Inc	SUM	Industrials	United States	NYSE	CITI, GS, BAML, DB, RBC, BRCLY	•	•	24.92 ↓	436.1 ↓	502.1	25.75	19.5	100.0	-1.08	0.00	3.33
8/6/15	Medical Properties Trust, Inc.	MPW	REIT	United States	NYSE	GS, JPM, BAML, BRCLY, CREDITAG, CS, KEYBANC	•	•	13.47	589.3	306.3	12.25	25.0	100.0	-3.16	0.08	-9.06
8/6/15	American Equity Investment Life Holding Co.	AEL	Financials	United States	NYSE	RBC, JPM, CITI, FBR, RAYMND, SUNTCAP	•	•	29.18	250.9	217.2	25.25	8.6	50.0	-2.92	-	-13.47
8/4/15	Integra LifeSciences Holdings Corp.	IART	Healthcare	United States	NASDAQ	JPM, WFC, RBC	•	•	64.08	200.0	201.3	61.00	3.3	100.0	-1.68	-0.16	-4.81
8/5/15	First Foundation Inc.	FFWM	Financials	United States	NASDAQ	SANDLER, DADAVID, RAYMND	•	•	21.43	100.0	120.0	19.25	6.2	100.0	-7.78	14.29	-10.17
8/5/15	Dermira, Inc.	DERM	Healthcare	United States	NASDAQ	LEERINK, COWEN, GUGGEN	•	•	22.46 ↓	84.2 ↓	96.8	21.50	4.5	100.0	-2.63	13.63	-4.27
8/4/15	Retail Opportunity Investments Corp.	ROIC	REIT	United States	NASDAQ	CITI, JPM, BMO, RAYMND, RBC	•	•	17.11	77.0	79.4	16.55	4.8	100.0	-3.27	1.21	-3.27
8/6/15	Benefitfocus, Inc.	BNFT	Technology	United States	NASDAQ	GS, DB, JEFFER	•	•	40.24 ↓	100.6 ↓	73.5	36.75	2.0	0.0	-0.97	-	-8.67
8/5/15	Impriata, Inc.	IMPR	Healthcare	United States	NYSE	JPM, BRCLY, PIPER, STFL	•	•	14.99	65.2	68.5	15.00	4.6	0.0	-2.34	6.67	0.07
8/5/15	Corium International Inc.	CORI	Healthcare	United States	NASDAQ	JEFFER, LEERINK	•	•	16.10	64.4	52.0	13.00	4.0	100.0	-2.48	-6.92	-19.25
8/4/15	Intec Pharma Ltd	NTEC	Healthcare	Israel	NASDAQ	MAXIM, ROTH	•	•	-	46.0	30.2	6.00	5.0	100.0	0.00	1.67	-
8/7/15	SMTP, Inc.	SMTP	Consumer Services	United States	NASDAQ	CRAIGHAL	•	•	6.56	9.0	3.8	4.75	0.8	100.0	-12.84	-	-27.59
8/4/15	One Horizon Group, Inc.	-	Technology	Ireland	NASDAQ	AEGIS	•	•	-	-	3.0	1.75	1.7	100.0	29.63	-	-
<b>Total:</b>										<b>1,754.0</b>	<b>Average:</b>			<b>-0.89</b>	<b>3.38</b>		

### Block Offerings This Week (7)

Issue Date	Issuer	Ticker	Sector	Domicile	Exchange	Bookrunners	Shelf Take.	Last Price (\$)	Pricing Statistics				Performance Stats	
									Amt. + Over. (\$M)	Offer Price (\$)	Shrs. Offered	% Primary	Shoe Exer.	Re-Off. Disc. (%)
8/6/15	IMS Health Holdings, Inc.	IMS	Healthcare	United States	NYSE	JPM, MS	•	32.1	628.0	31.40	20.0	0.0	-2.18	-1.27
8/5/15	Sabre Corp.	SABR	Technology	United States	NASDAQ	GS	•	27.49	510.2	26.85	19.0	0.0	-2.33	4.66
8/5/15	PG&E Corp.	PCG	Utilities	United States	NYSE	WFC	•	51.99	352.9	51.90	6.8	100.0	-0.17	0.50
8/5/15	RSP Permian, Inc.	RSPP	Energy	United States	NYSE	GS	•	22.76	157.5	22.50	7.0	100.0	-1.14	8.58
8/6/15	Surgical Care Affiliates, Inc.	SCAI	Healthcare	United States	NASDAQ	CITI	•	38.59	151.8	37.95	4.0	0.0	-1.66	-2.21
8/3/15	Central Pacific Financial Corp.	CPF	Financials	United States	NYSE	CITI, UBS	•	23.4	123.8	22.35	5.5	0.0	-4.49	1.52
8/4/15	Roadrunner Transportation Services Holdings, Inc.	RRTS	Industrials	United States	NYSE	RBAIRD	•	26.03	49.5	24.75	2.0	0.0	-4.92	0.93
<b>Total:</b>									<b>1,973.7</b>	<b>Average:</b>			<b>-2.41</b>	<b>1.81</b>

### Equity-Related Offerings This Week (1)

Issue Date	Issuer	Ticker	Sector	Domicile	Exchange	Bookrunners	Talk		Pricing Statistics				Maturity	
							Coupon (%)	Premium (%)	Amt. + Over. (\$M)	Offer Price (\$)	Coupon (%)	Premium (%)		Shoe Exer.
8/4/15	GNC Holdings, Inc.	GNC	Consumer Services	United States	NYSE	JPM	1.5-2	30-35	250.0	1,000.00	1.50	30.00	08/01/2020	
<b>Total:</b>									<b>250.0</b>					

# Ipreo Daily Market Update

## The Pipeline

Week of August 3, 2015

### Expected Deals This Week and Next (8)

Expected Date	Issuer	Ticker	Type	Sector	Domicile	Exchange	Bookrunners	Filed Terms			Timeline	
								Curr. Amt. Filed (\$M)	Curr. Shrs. Filed (M)	Curr. File Price/Range	Initial File Date	Last Amend. File Date
w/k of 08/10/15	E-compass Acquisition Corp.	ECACU	IPO	Blank Check	China	NASDAQ	CFCO	40.0	4.0	10.00	5/11/15	-
08/06/2015	GC Aesthetics plc	GCAA	IPO	Healthcare	Ireland	NASDAQ	BAML, DB, COWEN	74.9	5.4	13 - 15	6/24/15	7/27/15
08/07/2015	Pixelworks, Inc.	PXLW	FO	Technology	United States	NASDAQ	ROTH	-	-	5.51	8/6/15	-
08/11/2015	Global Blood Therapeutics, Inc.	GBT	IPO	Healthcare	United States	NASDAQ	MS, GS	102.0	6.0	16 - 18	7/8/15	7/31/15
08/11/2015	Conifer Holdings, Inc.	CNFR	IPO	Financials	United States	NASDAQ	BMO, RAYMND	55.2	4.6	11 - 13	7/2/15	7/30/15
08/12/2015	Houlihan Lokey, Inc.	HLI	IPO	Financials	United States	NYSE	BAML, GS, UBS, STFL, HLCAP	300.4	13.1	22 - 24	7/10/15	8/3/15
08/12/2015	Cyren Ltd	CYRN	FO	Technology	Israel	NASDAQ	CRAIGHAL	10.0	-	2.05	8/6/15	-
08/13/2015	Boxlight Corp	BOXL	IPO	Consumer Goods	United States	NASDAQ	AEGIS	20.0	1.8	10 - 12	6/8/15	7/28/15
<b>Total:</b>								<b>602.5</b>				

\* Bold text indicates a deal was initially filed or amended this week

### Amended Filings This Week (1)

Amended Date	Issuer	Ticker	Type	Sector	Domicile	Exchange	Bookrunners	Filed Terms			Timeline	
								Curr. Amt. Filed (\$M)	Curr. Shrs. Filed (M)	Curr. File Price/Range	Initial File Date	Expected Date
8/4/15	xG Technology, Inc.	-	FO	Technology	United States	NASDAQ	ROTH	10.0	1.2	-	5/4/15	To be ann.
<b>Total:</b>								<b>10.0</b>				

### Initial Filings This Week (4)

Filing Date	Issuer	Ticker	Type	Sector	Domicile	Exchange	Bookrunners	Filed Terms			Timeline
								Curr. Amt. Filed (\$M)	Curr. Shrs. Filed (M)	Curr. File Price/Range	Expected Date
8/3/15	INC Research Holdings, Inc.	INCR	FO	Healthcare	United States	NASDAQ	To be ann.	400.2	8.0	50.03	To be ann.
8/4/15	Boulevard Acquisition Corp. II	-	IPO	Blank Check	United States	NASDAQ	CITI	350.0	35.0	10.00	To be ann.
8/4/15	Neiman Marcus Group, Inc.	NMGM	IPO	Consumer Services	United States	To be ann.	To be ann.	100.0	-	-	To be ann.
8/5/15	C1 Financial, Inc.	BNK	FO	Financials	United States	NYSE	RAYMND	24.1	1.3	19.15	To be ann.
<b>Total:</b>								<b>874.3</b>			

### Shelf Filings This Week (13)

Filing Date	Issuer	Ticker	Type	Sector	Domicile	Exchange	Type	Filed Terms		
								Curr. Amt. Filed (\$M)	Curr. Shrs. Filed (M)	Curr. File Price/Range
8/3/15	Loxo Oncology, Inc.	LOXO	FO	Healthcare	United States	NASDAQ	Universal	200.0	-	-
8/3/15	Palatin Technologies Inc.	PTN	FO	Healthcare	United States	NYSE	Universal	100.0	-	-
8/3/15	Bio Blast Pharma Ltd.	ORPN	FO	Healthcare	Israel	NASDAQ	Common Stock	100.0	-	6.48
8/5/15	Federal-Mogul Holdings Corp	FDML	FO	Consumer Goods	United States	NASDAQ	Universal	1,000.0	-	-
8/5/15	Clean Energy Fuels Corp.	CLNE	FO	Utilities	United States	NASDAQ	Universal	500.0	-	-
8/5/15	Heritage Insurance Holdings, Inc.	HRTG	FO	Financials	United States	NYSE	Universal	400.0	-	-
8/5/15	CryoLife, Inc.	CRY	FO	Healthcare	United States	NYSE	Universal	150.0	-	-
8/5/15	TrueBlue, Inc.	TBI	FO	Industrials	United States	NYSE	Universal	100.0	-	-
8/6/15	Transocean Partners LLC	RIGP	FO	Energy	United Kingdom	NYSE	Universal	2,000.0	-	-
8/6/15	Tesoro Logistics LP	TLLP	FO	Energy	United States	NYSE	Common Stock	750.0	-	49.49
8/6/15	Synta Pharmaceuticals Corp.	SNTA	FO	Healthcare	United States	NASDAQ	Universal	300.0	-	-
8/6/15	Transocean Partners LLC	RIGP	FO	Energy	United Kingdom	NYSE	Common Stock	247.2	21.3	11.63
8/7/15	Monmouth Real Estate Investment Corp.	MNR	FO	REIT	United States	NYSE	Universal	500.0	-	-
<b>Total:</b>								<b>6,347.2</b>		

\* Shelf filings over \$50M

### Withdrawn or Postponed Deals This Week (3)

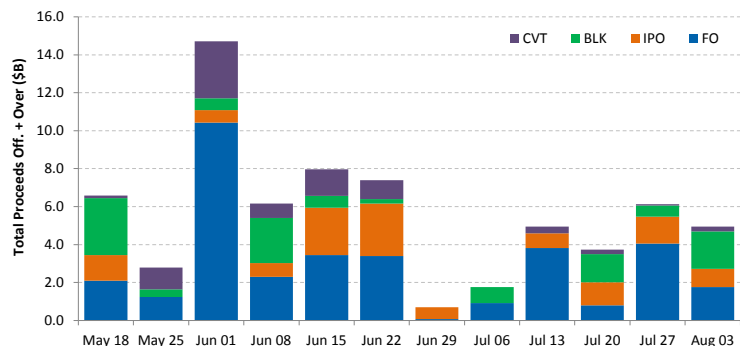
W/P Date	Issuer	Ticker	Type	Sector	Domicile	Exchange	Bookrunners	Filed Terms		
								Curr. Amt. Filed (\$M)	Curr. Shrs. Filed (M)	Reason
8/6/15	Philadelphia Energy Solutions Inc	PESC	IPO	Energy	United States	NYSE	BAML, GS, GS, BRCLY, JEFFER, JPM	250.0	15.2	Market Conditions
8/6/15	RiverBanc Multifamily Investors, Inc.	RMI	IPO	REIT	United States	NASDAQ	RBAIRD, STFL, SUNTCAP, NOMURA, OPPEN	74.1	3.8	Market Conditions
8/6/15	Benitec Biopharma Limited.	BNTC	FO	Healthcare	Australia	NASDAQ	BMO	70.0	5.0	Market Conditions
<b>Total:</b>								<b>394.1</b>		

# Ipreo Daily Market Update

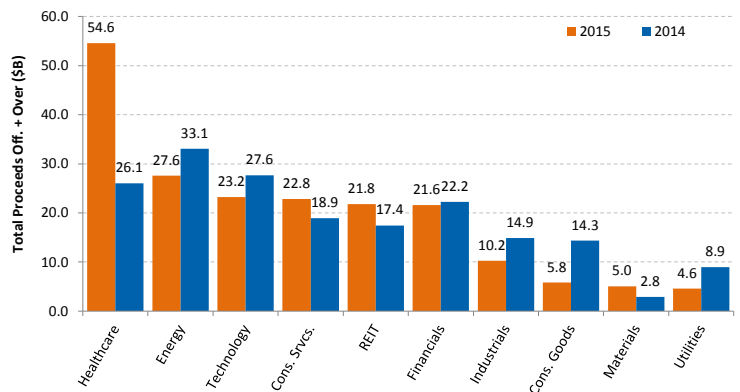
## Market Summary

Week of August 3, 2015

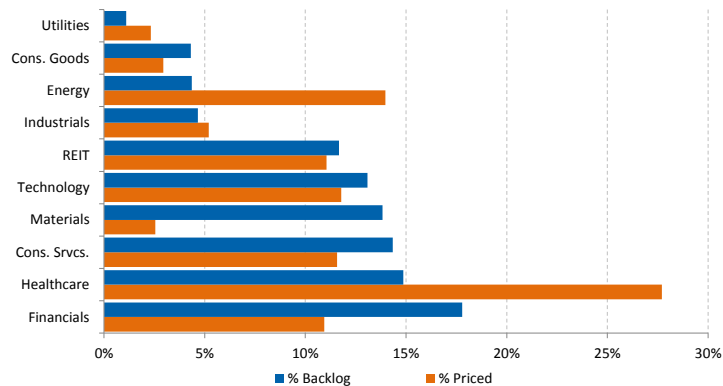
Trailing 12-Week US Proceeds by Deal Type



YoY Total US Issuance by Industry



YTD US Priced vs. Backlog



Market Summary

Major Indices	Last Close	1-Day (%)	1-Week (%)	1-Month (%)	1-Year (%)	YTD (%)
S&P 500	2,083.6	-0.78	-1.19	0.72	8.51	1.20
Dow Jones	17,419.8	-0.69	-1.84	-1.49	5.94	-2.26
NASDAQ	5,056.4	-1.62	-1.41	1.29	16.11	6.76
Russell 2000	1,215.8	-1.29	-1.32	-2.50	8.02	0.93
FTSE 100	6,747.1	-0.08	1.17	3.23	1.67	2.76
DAX	11,585.1	-0.44	2.91	6.38	26.89	18.15
Nikkei 225	20,664.4	0.24	0.69	2.75	36.31	18.42
Hang Seng	24,375.3	-0.57	-0.50	-3.41	-0.85	3.26
Brazil Bovespa	50,011.3	-0.55	0.23	-4.10	-11.46	0.01
Mexico IPC	44,921.2	-0.04	1.23	0.28	1.12	4.12

S&P 500 Sector Indices

Sector	Last	1-Day	1-Week	1-Month	1-Year	YTD
Materials	287.6	-0.42	-0.54	-4.68	-7.20	-5.80
Financials	338.3	-0.32	-0.64	2.27	12.87	1.49
Consumer Disc.	621.0	-1.34	-2.06	1.59	19.28	8.42
Consumer Staples	517.2	-0.72	0.49	4.55	14.82	3.53
Energy	499.6	1.59	-4.21	-7.37	-28.28	-14.82
Healthcare	871.9	-2.09	-0.95	0.82	24.49	10.09
Industrials	464.6	-0.44	-0.59	-0.12	4.90	-4.49
Information Tech.	703.5	-1.03	-1.68	1.35	10.68	1.67
Telecom	150.3	-0.63	-0.78	-2.51	-5.01	-1.46
Utilities	222.4	0.46	0.61	3.35	9.18	-7.38

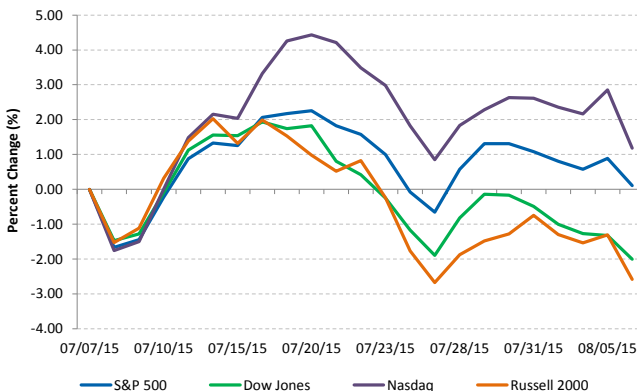
Commodities (NYMEX Front Month Contract)

Commodity	Last	1-Day	1-Week	1-Month	1-Year	YTD
Gold	1,090.1	0.41	0.16	-7.08	-16.67	-7.94
Silver	14.7	0.85	-0.13	-6.83	-26.70	-5.91
Copper	2.34	-0.32	-1.51	-7.76	-26.06	-17.15
Crude Oil	44.7	-1.09	-7.96	-14.98	-53.92	-16.16
Natural Gas	2.8	0.54	1.63	2.07	-28.48	-2.87
Cotton	0.62	-1.98	-2.03	-7.01	-3.25	3.30
Corn	3.81	-0.72	-0.85	-10.79	1.67	-4.16
Sugar	0.11	-0.56	-5.06	-14.26	-34.44	-26.31
Wheat	5.07	1.00	2.11	-14.86	-10.74	-14.03

Major Currencies

Currency	USD	EUR	GBP	JPY	CAD	AUD
USD	1.000	0.916	0.644	124.725	1.312	1.356
EUR	1.092	1.000	0.704	136.195	1.433	1.480
GBP	1.552	1.421	1.000	193.573	2.036	2.104
JPY	0.008	0.007	0.005	1.000	0.011	0.011
CAD	0.762	0.698	0.491	95.073	1.000	1.033
AUD	0.738	0.676	0.475	0.968	0.968	1.000

Major US Indices 1-Month Trailing



Econ Calendar

Monday, August 03, 2015

Indicator	Period	Expectation	Result
Personal Income	Jun	0.3%	0.4%
Personal Spending	Jun	0.2%	0.2%
PCE Prices - Core	Jun	0.2%	0.1%
ISM Index	Jul	53.7	52.7
Construction Spending	Jun	0.6%	0.1%
Auto Sales	Jul	-	-
Truck Sales	Jul	-	-

Tuesday, August 04, 2015

Indicator	Period	Expectation	Result
Factory Orders	Jun	1.8%	1.8%

Wednesday, August 05, 2015

Indicator	Period	Expectation	Result
MBA Mortgage Index	1-Aug	-	4.75
ADP Employment Change	Jul	220K	185K
Trade Balance	Jun	-42.7B	-43.8B
ISM Services	Jul	56.3	60.3
Crude Inventories	1-Aug	-	-4.407M

Thursday, August 06, 2015

Indicator	Period	Expectation	Result
Challenger Job Cuts	Jul	-	125.40%
Initial Claims	1-Aug	271K	270K
Continuing Claims	29-Jul	2238K	2255K
Natural Gas Inventories	1-Aug	-	32 bcf

Friday, August 07, 2015

Indicator	Period	Expectation	Result
Nonfarm Payrolls	Jul	227K	-
Nonfarm Private Payrolls	Jul	223K	-
Unemployment Rate	Jul	5.3%	-
Hourly Earnings	Jul	0.2%	-
Average Workweek	Jul	34.5	-
Consumer Credit	Jul	\$17.0B	-

Source: Briefing.com

About Ipreo Analytics

Ipreo Capital Markets Services is an outsourced consultative service that serves as an extension of your team, focused on providing research, intelligence and data on the capital markets. If you have any questions, please contact Ipreo Capital Markets at [CapitalMarkets@ipreo.com](mailto:CapitalMarkets@ipreo.com) or 212.812.0950.

All deal data provided by Ipreo's Equity Deals Database, a comprehensive U.S. equities deals database providing quick and accurate deal information.