

# U.S. Equity Capital Markets

## Daily Market Update



Friday, June 24, 2016

Data as of 8:00 AM

# Ipreo Daily Market Update

## Priced Deals

Week of June 20, 2016

### Initial Public Offerings This Week (2)

Issue Date	Issuer	Ticker	Sector	Domicile	Exchange	Bookrunners	Fin. Spons.	Filed Terms		Pricing Statistics				Performance Statistics		
								Last File Range (\$)	Last Offer Amt. (\$M)	Amt. + Over. (\$M)	Offer Price (\$)	Shrs. Offered	% Primary	Shoe Exer.	Last Sale/ Offer (%)	Offer/ Curr. (%)
6/22/16	Twilio Inc.	TWLO	Technology	United States	NYSE	GS, JPM	•	12 - 14	130.0	150.0	15.00	10.0	100.0	15.38	91.93	Above
6/21/16	Selecta Biosciences, Inc.	SELB	Healthcare	United States	NASDAQ	UBS, STFL	•	14 - 16	63.8	70.0	14.00	5.0	100.0	-6.67	0.21	Within
<b>Total:</b>										<b>220.0</b>			<b>Average:</b>	<b>4.36</b>	<b>46.07</b>	

### Follow-On Offerings This Week (6)

Issue Date	Issuer	Ticker	Sector	Domicile	Exchange	Bookrunners	Accel. Deal	Shelf Take.	Filed Terms		Pricing Statistics				Performance Statistics			
									Last File Range (\$)	Last Offer Amt. (\$M)	Amt. + Over. (\$M)	Offer Price (\$)	Shrs. Offered	% Primary	Shoe Exer.	Last Sale/ Offer (%)	Offer/ Curr. (%)	Offer (%)
6/20/16	Communications Sales & Leasing Inc	CSAL	REIT	United States	NASDAQ	CITI, BRCLY, BAML, CS, GS, JPM, WFC	•	•	28.16	413.4	439.1	26.01	14.7	0.0	•	-7.63	13.11	-7.63
6/22/16	Planet Fitness, Inc.	PLNT	Consumer Services	United States	NYSE	JPM, BAML, JEFFER, GUGGEN, RBAIRD, WBLAIR, CS, PIPER			19.49 ↑	194.9 ↑	189.8	16.50	10.0	0.0	•	-2.42	15.15	-15.34
6/20/16	Global Blood Therapeutics, Inc.	GBT	Healthcare	United States	NASDAQ	JPM, MS			17.83 ↓	100.0 ↓	120.0	18.75	6.4	100.0		-1.00	-10.72	5.16
6/21/16	Paratek Pharmaceuticals, Inc	PRTK	Healthcare	United States	NASDAQ	LEERINK, GUGGEN		•	16.54	62.0	55.3	13.00	4.3	100.0		-2.11	3.23	-21.40
6/21/16	Scynexis, Inc.	-	Healthcare	United States	NASDAQ	GUGGEN	•		-	-	22.5	2.40	9.4	100.0		0.00	-	-
6/21/16	Medgenics, Inc.	MDGN	Healthcare	United States	NYSE MKT	JEFFER	•	•	6.24	-	20.0	5.50	3.6	100.0		-11.86	4.18	-11.86
<b>Total:</b>										<b>846.7</b>			<b>Average:</b>	<b>-4.17</b>	<b>4.99</b>			

### Block Offerings This Week (1)

Issue Date	Issuer	Ticker	Sector	Domicile	Exchange	Bookrunners	Shelf Take.	Last Price (\$)	Pricing Statistics				Performance Stats		
									Amt. + Over. (\$M)	Offer Price (\$)	Shrs. Offered	% Primary	Shoe Exer.	Re-Off. Disc. (%)	Offer/ Curr. (%)
6/21/16	QEP Resources, Inc.	QEP	Energy	United States	NYSE	JPM, DB, WFC, BMO	•	19.32	367.0	18.35	20.0	100.0		-5.02	1.85
<b>Total:</b>									<b>367.0</b>			<b>Average:</b>	<b>-5.02</b>	<b>1.85</b>	

### Equity-Related Offerings This Week (2)

Issue Date	Issuer	Ticker	Sector	Domicile	Exchange	Bookrunners	Talk		Pricing Statistics					Maturity
							Coupon (%)	Premium (%)	Amt. + Over. (\$M)	Offer Price (\$)	Coupon (%)	Premium (%)	Shoe Exer.	
6/20/16	Cypress Semiconductor Corp.	CY	Technology	United States	NASDAQ	BAML, CS, BRCLY	4.5-5	27.5-32.5	287.5	1,000.00	4.50	32.50	•	01/15/2022
6/21/16	Universal American Financial Corp.	UAM	Healthcare	United States	NYSE	GS	4-4	13.1-13.1	115.0	1,000.00	4.00	13.05	•	07/01/2021
<b>Total:</b>									<b>402.5</b>					

# IPREO Daily Market Update

## The Pipeline

Week of June 20, 2016

### Expected Deals This Week and Next (9)

Expected Date	Issuer	Ticker	Type	Sector	Domicile	Exchange	Bookrunners	Filed Terms			Timeline	
								Curr. Amt. Filed (\$M)	Curr. Shrs. Filed (M)	Curr. File Price/Range	Initial File Date	Last Amend. File Date
w/k of 06/20/16	Amedica Corp.	AMDA	FO	Healthcare	United States	NASDAQ	LADENBURG, MAXIM	11.5	-	1.46	5/20/16	-
w/k of 06/20/16	<b>MabVax Therapeutics Holdings, Inc.</b>	-	FO	Healthcare	United States	OTCBB	ROTH, LAIDLAK	4.7 ↓	8.1 ↓	0.58 ↓	5/17/16	6/23/16
w/k of 06/27/16	Global Medical REIT, Inc.	GMRE	IPO	REIT	United States	NYSE	WUNDER, OPPEN	100.1	9.1	10 - 12	4/1/16	6/16/16
w/k of 06/27/16	Tactile Systems Technology, Inc.	TCMD	IPO	Healthcare	United States	NASDAQ	PIPER, WBLAIR, CANACC	60.0	4.0	14 - 16	1/25/16	6/9/16
w/k of 06/27/16	Gemphire Therapeutics Inc.	GEMP	IPO	Healthcare	United States	NASDAQ	JEFFER, RBC	45.0	3.8	11 - 13	4/18/16	6/13/16
06/23/16	AgEagle Aerial Systems Inc.	UAVS	IPO	Industrials	United States	NASDAQ	NORTHL, ROTH	15.0	2.7	5 - 6	5/19/16	6/10/16
06/23/16	<b>Long Island Iced Tea Corp.</b>	LTEA	FO	Consumer Goods	United States	NASDAQ	NETWORK, AXIOM	11.5	1.5	-	4/8/16	6/21/16
06/27/16	<b>Monster Digital, Inc.</b>	-	IPO	Technology	United States	NASDAQ	AXIOM	11.9 ↓	2.5 ↑	4.50 - 5 ↓	11/10/15	6/24/16
06/29/16	<b>Syros Pharmaceuticals, Inc.</b>	SYRS	IPO	Healthcare	United States	NASDAQ	COWEN, PIPER	60.0	4.0	14 - 16	6/3/16	6/20/16
<i>* Bold text indicates a deal was initially filed or amended this week</i>								<b>Total:</b>	<b>319.7</b>			

### Amended Filings This Week (0)

Amended Date	Issuer	Ticker	Type	Sector	Domicile	Exchange	Bookrunners	Filed Terms			Timeline	
								Curr. Amt. Filed (\$M)	Curr. Shrs. Filed (M)	Curr. File Price/Range	Initial File Date	Expected Date
No Amended Filings this week												

### Initial Filings This Week (2)

Filing Date	Issuer	Ticker	Type	Sector	Domicile	Exchange	Bookrunners	Filed Terms			Timeline	
								Curr. Amt. Filed (\$M)	Curr. Shrs. Filed (M)	Curr. File Price/Range	Expected Date	
6/20/16	Conyers Park Acquisition Corp.	CPAAU	IPO	Blank Check	United States	NASDAQ	DB, GS	350.0	35.0	10.00		To be ann.
6/22/16	Centennial Resource Development, Inc.	CDEV	IPO	Energy	United States	NASDAQ	CS, BRCLY	100.0	-	-		To be ann.
<b>Total:</b>								<b>450.0</b>				

### Shelf Filings This Week (6)

Filing Date	Issuer	Ticker	Type	Sector	Domicile	Exchange	Type	Filed Terms				
								Curr. Amt. Filed (\$M)	Curr. Shrs. Filed (M)	Curr. File Price/Range		
6/20/16	Viking Therapeutics, Inc.	VKTX	FO	Healthcare	United States	NASDAQ	Universal	150.0	-	-		
6/21/16	Ares Capital Corp.	ARCC	FO	Financials	United States	NASDAQ	Universal	3,000.0	-	-		
6/21/16	MDC Holdings, Inc.	MDC	FO	Consumer Services	United States	NYSE	Universal	1,500.0	-	-		
6/21/16	Golden Entertainment, Inc.	GDEN	FO	Consumer Services	United States	NASDAQ	Universal	150.0	-	-		
6/22/16	Global Partners L.P.	GLP	FO	Energy	United States	NYSE	Universal	300.0	-	-		
6/23/16	Suncor Energy Inc.	SU	FO	Energy	Canada	NYSE	Universal	3,000.0	-	-		
<i>* Shelf filings over \$50M</i>								<b>Total:</b>	<b>8,100.0</b>			

### Withdrawn or Postponed Deals This Week (2)

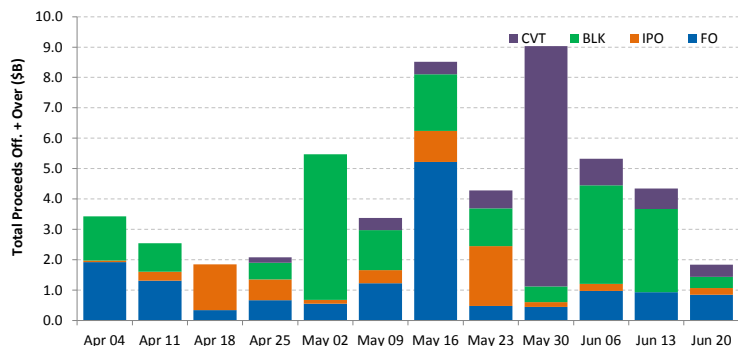
W/P Date	Issuer	Ticker	Type	Sector	Domicile	Exchange	Bookrunners	Filed Terms			
								Curr. Amt. Filed (\$M)	Curr. Shrs. Filed (M)	Reason	
6/21/16	BankAtlantic Bancorp, Inc.	BBX	FO	Financials	United States	NYSE	-	125.0	-	Unknown	
6/22/16	Armstrong Resource Partners, L.P.	ARPS	IPO	Energy	United States	NASDAQ	RAYMND, FBR, STFL	22.0	-	Market Conditions	
<b>Total:</b>								<b>147.0</b>			

# Ipreo Daily Market Update

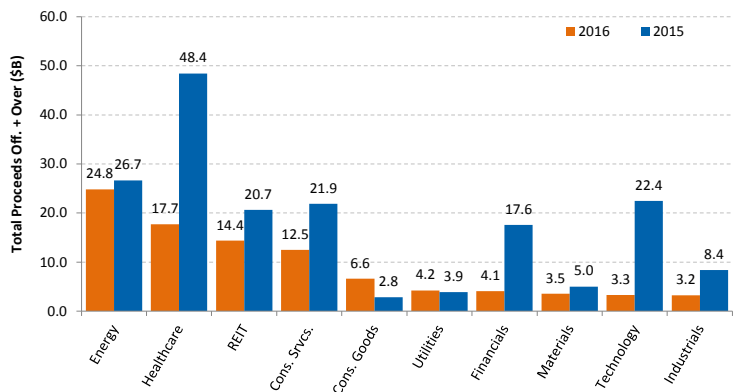
## Market Summary

Week of June 20, 2016

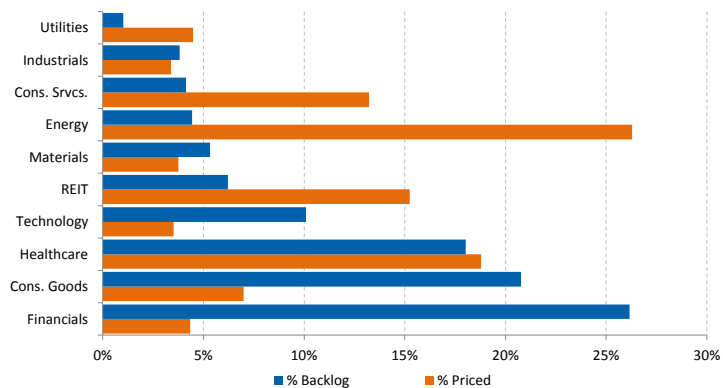
Trailing 12-Week US Proceeds by Deal Type



YoY Total US Issuance by Industry



YTD US Priced vs. Backlog



Market Summary

Major Indices	Last Close	1-Day (%)	1-Week (%)	1-Month (%)	1-Year (%)	YTD (%)
S&P 500	2,113.3	1.34	1.70	3.19	-0.51	3.39
Dow Jones	18,011.1	1.29	1.57	2.96	-0.73	3.36
NASDAQ	4,910.0	1.59	1.34	3.03	-4.85	-1.94
Russell 2000	1,172.2	2.02	2.09	5.48	-9.54	3.20
FTSE 100	6,338.1	1.23	6.51	3.29	-7.27	1.53
DAX	10,257.0	1.85	7.40	4.21	-11.14	-4.52
Nikkei 225	16,238.4	1.07	5.21	-2.50	-21.97	-14.69
Hang Seng	20,868.3	0.35	4.14	5.35	-23.65	-4.77
Brazil Bovespa	51,559.8	2.80	4.35	4.52	-4.11	18.94
Mexico IPC	46,145.9	0.74	2.04	2.01	1.52	7.37

S&P 500 Sector Indices

S&P 500 Sector Indices	Last Close	1-Day (%)	1-Week (%)	1-Month (%)	1-Year (%)	YTD (%)
Materials	302.4	1.56	2.39	3.07	-4.23	10.51
Financials	314.9	2.10	3.02	0.95	-7.29	-2.11
Consumer Disc.	628.5	0.95	1.30	2.33	1.23	1.20
Consumer Staples	555.3	0.66	0.73	4.05	11.09	7.11
Energy	515.8	1.66	3.86	5.00	-8.74	15.03
Healthcare	825.4	1.26	0.81	3.18	-6.62	-0.94
Industrials	492.6	1.15	1.75	3.58	2.13	6.26
Information Tech.	727.3	1.50	1.30	2.95	1.28	0.81
Telecom	178.2	1.32	2.91	9.69	13.51	18.90
Utilities	255.9	0.33	-0.02	5.90	19.44	16.31

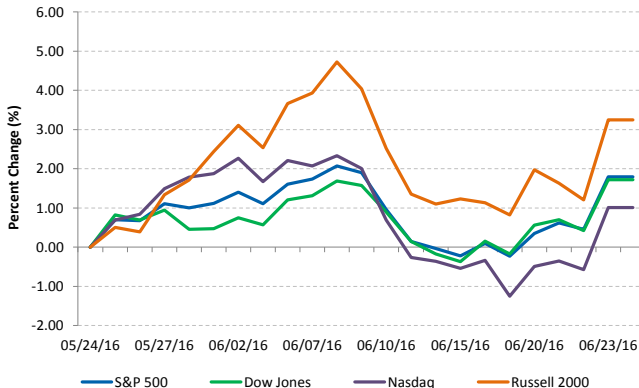
Commodities (NYMEX Front Month Contract)

Commodities	Last Close	1-Day (%)	1-Week (%)	1-Month (%)	1-Year (%)	YTD (%)
Gold	1,263.1	-0.54	-2.72	0.93	7.35	19.14
Silver	17.4	0.24	-1.44	5.66	10.27	25.72
Copper	2.16	1.26	5.59	5.23	-17.24	1.29
Crude Oil	50.1	1.99	8.44	4.22	-17.87	35.29
Natural Gas	2.7	0.78	4.57	31.29	-1.03	15.45
Cotton	0.65	1.38	0.75	6.46	1.35	3.38
Corn	3.87	-1.46	-8.94	-2.64	5.37	7.94
Sugar	0.19	0.10	-2.88	14.23	63.04	25.92
Wheat	4.66	1.53	-1.43	0.81	-11.62	-0.90

Major Currencies

Major Currencies	USD	EUR	GBP	JPY	CAD	AUD
USD	1.000	0.900	0.719	103.000	1.299	1.351
EUR	1.112	1.000	0.799	114.492	1.444	1.502
GBP	1.391	1.251	1.000	143.252	1.807	1.879
JPY	0.010	0.009	0.007	1.000	0.013	0.013
CAD	0.770	0.692	0.553	79.285	1.000	1.040
AUD	0.740	0.666	0.532	0.962	0.962	1.000

Major US Indices 1-Month Trailing



Econ Calendar

Monday, June 20, 2016			
Indicator	Period	Expectation	Result
No Releases Scheduled			

Tuesday, June 21, 2016			
Indicator	Period	Expectation	Result
No Releases Scheduled			

Wednesday, June 22, 2016			
Indicator	Period	Expectation	Result
No Releases Scheduled			
MBA Mortgage Index	6/18	NA	2.9%
FHFA Housing Price Index	Apr	NA	0.2%
Existing Home Sales	May	5.50M	5.53M
Crude Inventories	6/18	NA	-0.917M

Thursday, June 23, 2016			
Indicator	Period	Expectation	Result
Initial Claims	6/18	273K	259K
Continuing Claims	6/11	NA	2142K
New Home Sales	May	560K	551K
Leading Indicators	May	0.2%	-0.2%
Natural Gas Inventories	6/18	NA	62 bcf

Friday, June 24, 2016			
Indicator	Period	Expectation	Result
Durable Orders	May	-0.6%	
Durables Orders, ex-transp.	May	0.1%	
Michigan Sentiment-Final	Jun	94.0	

Source: Briefing.com

### About Ipreo Analytics

Ipreo Capital Markets Services is an outsourced consultative service that serves as an extension of your team, focused on providing research, intelligence and data on the capital markets. If you have any questions, please contact Ipreo Capital Markets at [CapitalMarkets@ipreo.com](mailto:CapitalMarkets@ipreo.com) or 855-288-5995.

All deal data provided by Ipreo's Equity Deals Database, a comprehensive U.S. equities deals database providing quick and accurate deal information.

