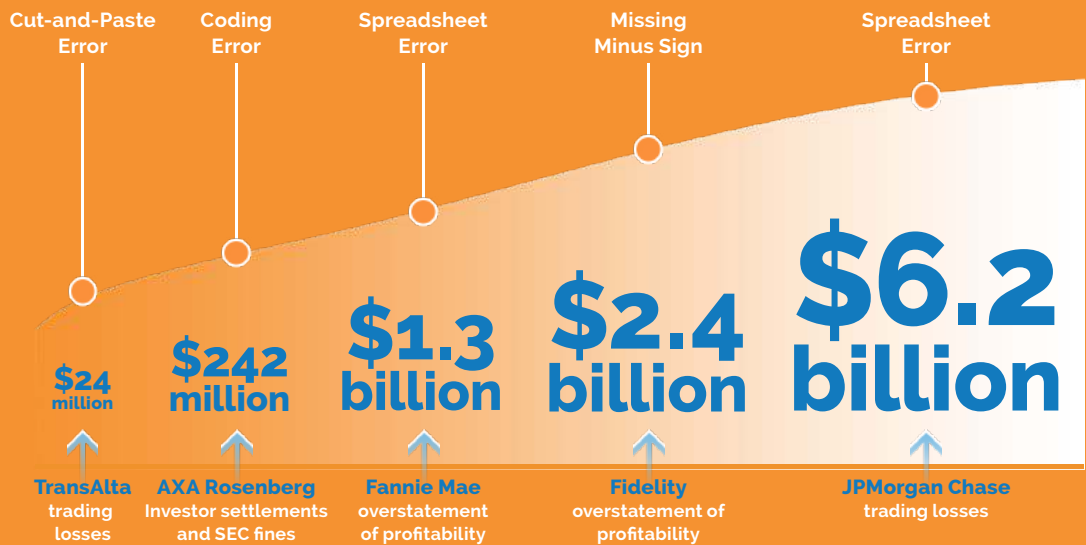


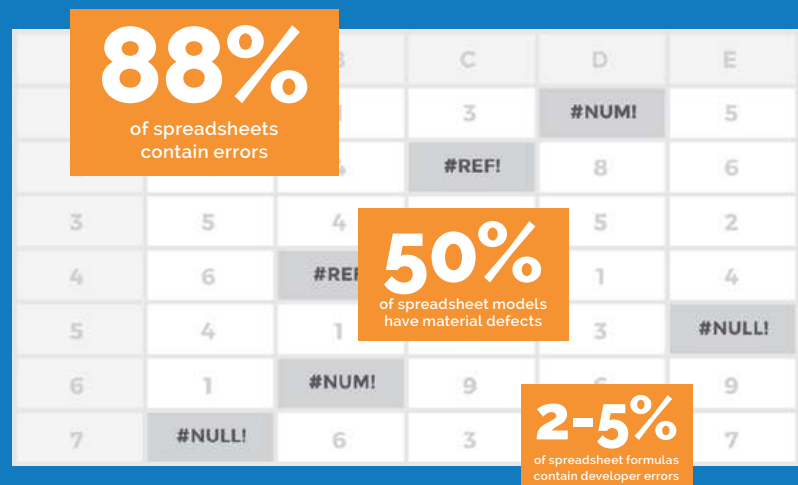
RISKY BUSINESS: WHAT PRIVATE CAPITAL FIRMS NEED TO KNOW ABOUT USING SPREADSHEETS FOR PORTFOLIO MONITORING

Spreadsheets help private capital firms and investors track investments and make key decisions. But how reliable are they? Here's what you need to know about the risks.

THE COST OF SPREADSHEET BLUNDERS



Nearly 3 in 4 private capital firms use spreadsheets to collect and analyze portfolio company data, but...



SPREADSHEET ERRORS CAN APPEAR IN...



THE RESULT:

Private capital firms may impact their credibility in front of investors and regulators.

WATCH OUT FOR THESE TOP 3 RISKS

76%

of spreadsheets contain inaccurate data (miskeyed or overstated)

2	9	4	#REF!	8	6
3	5	4	1	5	2

49%

of spreadsheets contain errors inherited from other spreadsheets

1	2	3	#NULL
#NUM!	9	6	9

33%

of spreadsheets contain model errors, including structural errors and errors of omission

6	1	#N/A
7	#NULL!	6

TOP 3 WAYS TO REDUCE ERRORS

Use validation tools.
Create an automated system that generates data exception reports to minimize risks of invalid data entering the system.

Build in automated approvals.
Create business rules that ensure data is reviewed and approved by the right people before it can be accepted by the system.

Track data back to the source.
Link cell data to source documentation so that figures can be confirmed and contextualized easily.

3 MORE REPORTING BEST PRACTICES FOR PRIVATE CAPITAL



Automate.

Only 1 in 4

private capital firms are benefiting from proprietary or third-party solutions that automate portfolio company data collection and analysis.



Share more.

3 out of 4

investors want reports on both portfolio and fund investment activity.



Go digital.

9 out of 10

investors want to receive financial data from private capital firms in digital format.

Brought to you by Ipreo, a leading global provider of financial services technology, data, and analytical services, supporting all participants in the capital-raising process including sell-side professionals, finance officers at private and public companies, institutional investors, and asset managers.

Learn more at ipreo.com/private-markets

DATA SOURCES:

- Fortune | <http://fortune.com/2013/04/17/damn-excel-how-the-most-important-software-application-of-all-time-is-ruining-the-world/>
- Raymond Panko | <http://panko.shidler.hawaii.edu/SSR/Mypapers/whatknow.html>
- Carnegie Mellon University | <http://repository.cmu.edu/cgi/viewcontent.cgi?article=1025&context=heinzworks>
- EY | <https://www.ey.com/ch/en/Publications/20150219-Positioning-to-win-2015-global-private-equity-survey/download>
- Business Week | <http://www.businessweek.com/ap/financialnews/D9L5L5J00.htm>
- New York Times | <http://www.nytimes.com/1994/12/07/business/doubts-raised-by-fidelity-accounting-error.html>
- Grenville J. Croll | <http://arxiv.org/pdf/0908.4420.pdf>
- David Chadwick | <http://arxiv.org/pdf/0712.2594v1.pdf>
- Raymond Panko | <http://arxiv.org/pdf/0712.0109v1.pdf>



SHARE THIS INFO!



COPYRIGHT ©2018 IPREO. ALL RIGHTS RESERVED.